

Symbol Key

Light

- ETC ColorSource Fresnel V @ 90w
- ETC ColorSource Spot V 36deg @ 160w
- ETC Source4 LED Series 3 26deg @ 171w
- ETC Source4 LED Series 3 Cyclight @ 171w

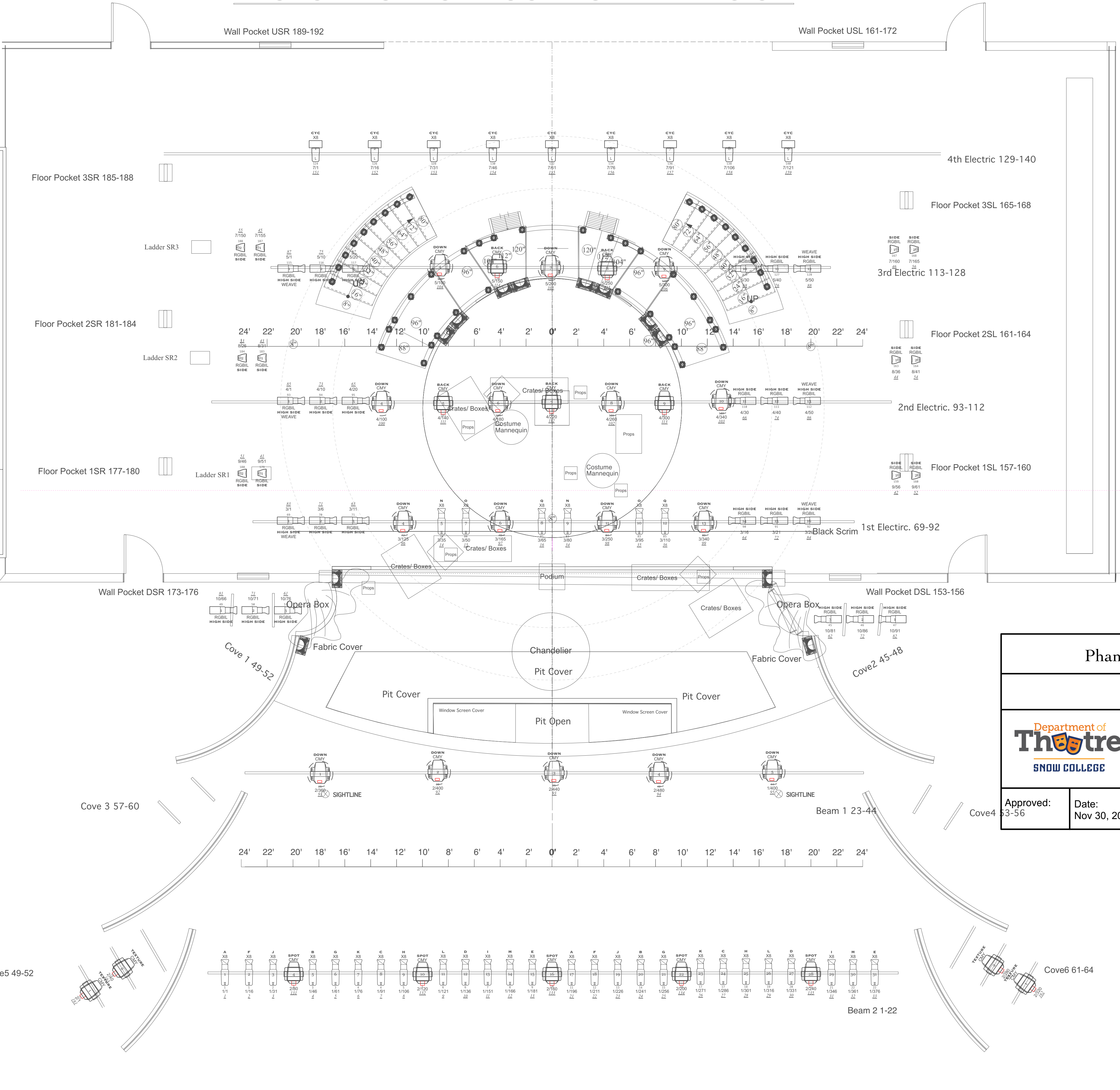
Moving Light

- High End SolaWash 3000 @ 967 w
- High End Systems Halcyon Platinum @ 500w

Typical

Color	Size	Count
CMY	High End Systems Halcyon Platinum	14
CMY	High End SolaWash 3000	12
RGBIL	8"	24
RGBIL	6.25"	24
X8	6.25"	32
X8	12.8"x6.67"	9

Focus Color
Grid 1
User Number
Universal Address Channel



47	
46	
45	
44	
43	
42	
41	
40	4TH ELECTRIC
39	Border
38	
37	
36	
35	
34	Leg
33	
32	
31	
30	
29	
28	3DR ELECTRIC
27	Leg and Border
26	
25	
24	
23	
22	
21	
20	
19	
18	
17	Leg
16	2ND ELECTRIC
15	
14	Hannibal Backdrop
13	
12	
11	Leg
10	
9	Palm Tree
8	
7	
6	Leg / Sandbag
5	
4	1ST ELECTRIC
3	Black Skrim
2	False Proscenium
1	FRONT CURTAIN

Phantom of the Opera				
Snow College Theater Arts Department Kim Christison Theater				
Department of Theatre SNOW COLLEGE		Lighting Plot		
		Director: Milinda Weeks Set Designer: Milinda Weeks Lighting Designer: Lilli Rowan		
Approved: 3-56	Date: Nov 30, 2022	Rev. Date:	Dwg. No 1 of 1	Scale: 1/4" = 1"